



INDOFINE Chemical Company, Inc.

121 Stryker Lane, Bldg. 30, Suite 1 • Hillsborough, NJ 08844 • U.S.A.

Phone: (908) 359-6778 • FAX: (908) 359-1179

website: www.indofinechemical.com

e-mail: chemical@indofinechemical.com

CERTIFICATE OF ANALYSIS

Catalog Number: 19-336

Product: **3(3'-BROMOPHENYL)-6-CHLORO-4-METHYLCOUMARIN**

Lot Number: 0010246

Chemical Formula: C₁₆H₁₀BrClO₂

Molecular Weight: 349.61

Melting Point: 183-185°C

Appearance: Off white powder

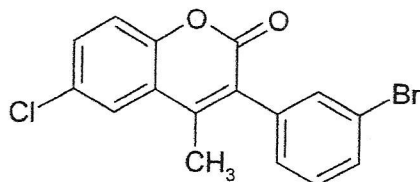
Solubility: Soluble in Chloroform

TLC: Hexane:Ethyl acetate (7:3)

NMR Spectrum: Enclosed (Confirms to the structure)

Storage: Cool dry place

Purity (HPLC): 99.38%





INDOFINE Chemical Company, Inc.

121 Stryker Lane, Bldg. 30, Suite 1 • Hillsborough, NJ 08844 • U.S.A.

Phone: (908) 359-6778 • FAX: (908) 359-1179

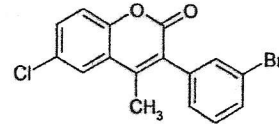
website: www.indofinechemical.com

e-mail: chemical@indofinechemical.com

HPLC ANALYSIS

Acquired by : Sanjeev
Sample Name : 3(3'-Bromophenyl)-6-chloro-4-methylcoumarin
Sample ID : Lot No: 0010246
Injection Volume : 20 uL
Data Filename : 130813M.lcd
Method Filename : Linear Isocratic.M.lcm

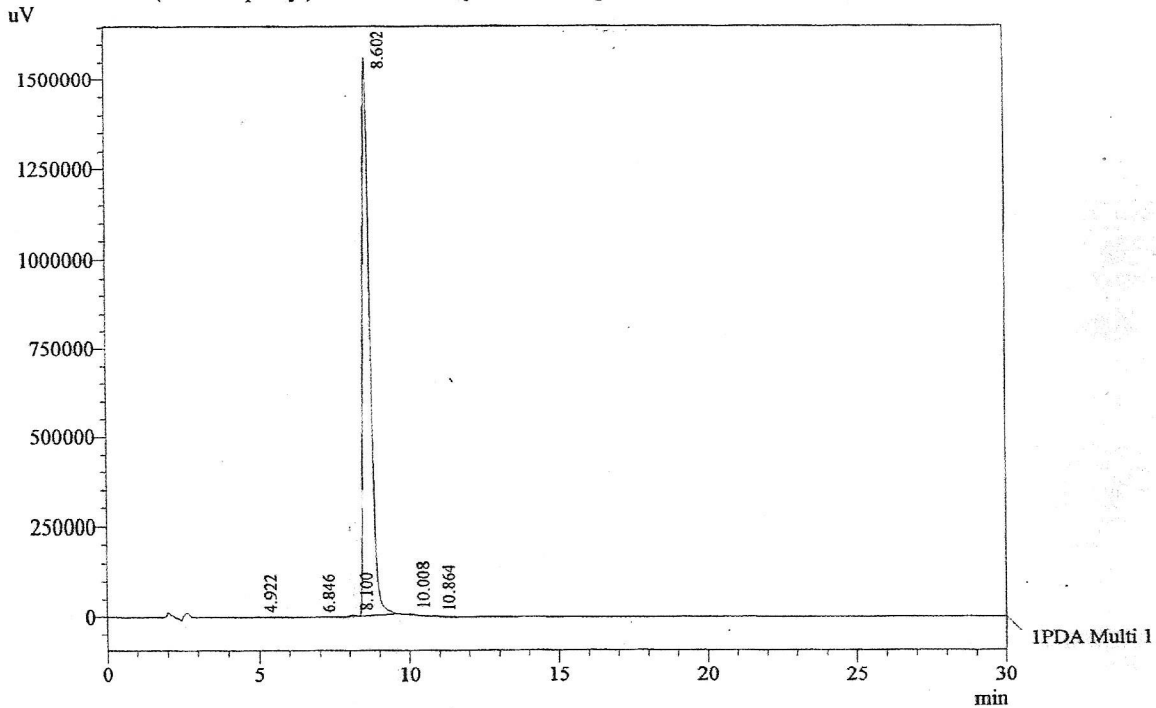
Catalog No.: 19-336
Product Name: 3(3'-Bromophenyl)-6-chloro-4-methylcoumarin
Lot No.: 0010246



Column : LUNA C-18(2), (250mm x4.6mm 5.0μ)
Flow : 1.000 mL/min.
Mobile Phase : A(20% of 0.05% TFA in water) B(80% of Acetonitrile)

Chromatogram

3(3'-Bromophenyl)-6-chloro-4-methylcoumarin D:\promonence\Data\2013\AUG-2013\130813M.lcd



1 PDA Multi 1 / 230nm 4nm

PeakTable

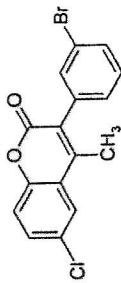
PDA Ch1 230nm 4nm

Peak#	Name	Ret. Time	Area	Area %	Relative Retention Time
1	RT:4.922	4.922	8041	0.03	0.57
2	RT:6.846	6.846	4666	0.02	0.80
3	RT:8.100	8.100	56779	0.22	0.94
4	RT:8.602	8.602	26212143	99.38	1.00
5	RT:10.008	10.008	71759	0.27	1.16
6	RT:10.864	10.864	23573	0.09	1.26
Total			26376960	100.00	



INDOFINE Chemical Company, Inc.
 121 STRYKER LANE
 BLDG. 30, SUITE 1
 HILLSBOROUGH, NJ 08844

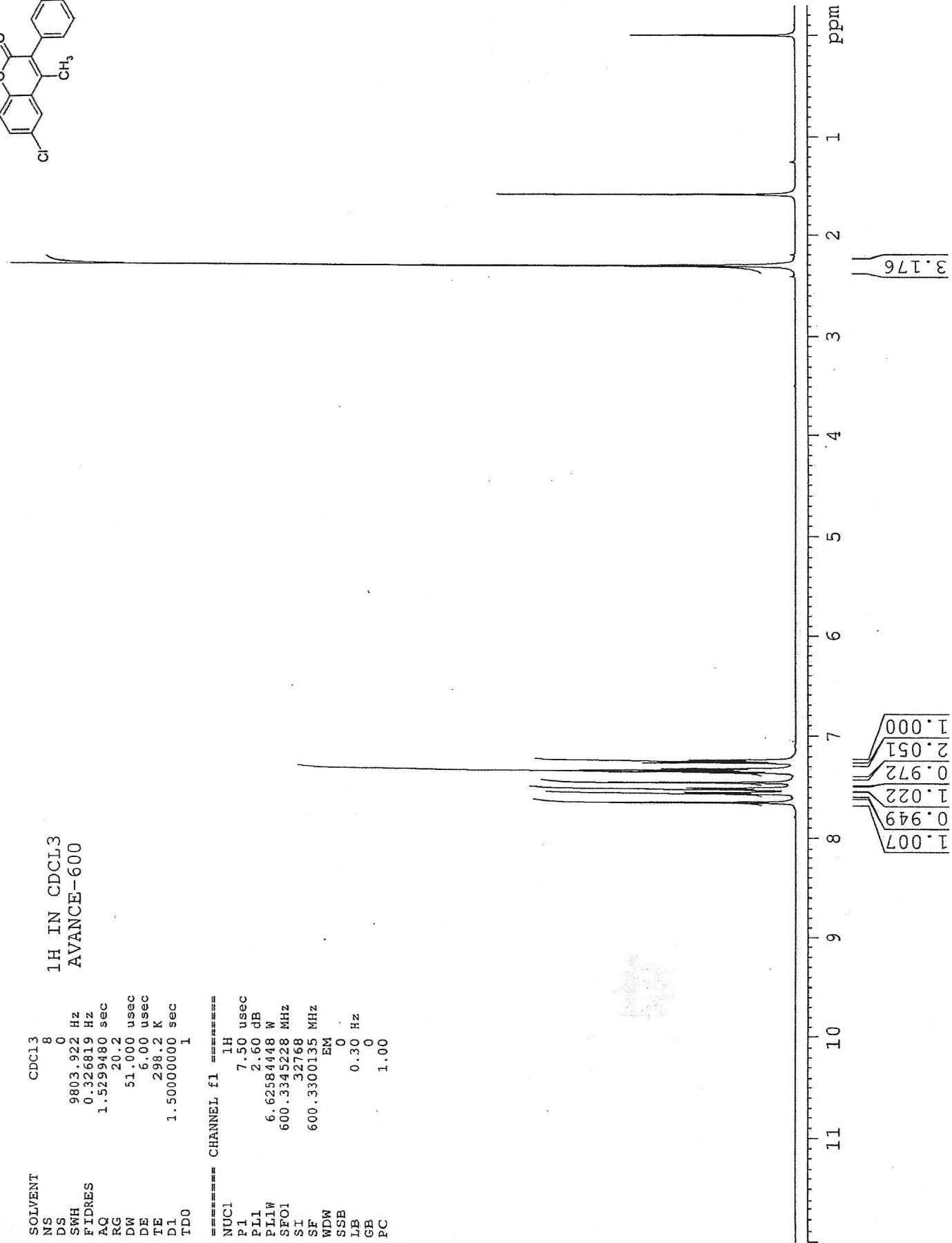
Catalog No.: 19-336
 Product Name: 3(3'-Bromophenyl)-6-chloro-4-methylcoumarin
 Lot No.: 0010246



1H IN CDCL3
 AVANCE-600

SOLVENT CDCL3
 NS 8
 DS 0
 SWH 9803.922 Hz
 FIDRES 0.326819 Hz
 AQ 1.5299480 sec
 RG 20.2
 DW 51.000 usec
 DE 6.00 usec
 TE 298.2 K
 D1 1.50000000 sec
 TD0 1

===== CHANNEL f1 =====
 NUC1 1H
 P1 7.50 usec
 PL1 2.60 dB
 PL1W 6.62584448 W
 SFO1 600.3345228 MHz
 SI 32768
 SF 600.3300135 MHz
 WDW EM
 SSB 0
 LB 0.30 Hz
 GB 0
 PC 1.00





INDOFINE Chemical Company, Inc.

121 STRYKER LANE

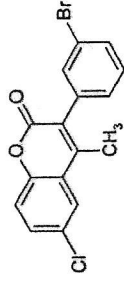
BLDG. 30, SUITE 1

HILLSBOROUGH, NJ 08844

Catalog No.: 19-336

Product Name: 3(3'-Bromophenyl)-6-chloro-4-methylcoumarin

Lot No.: 0010246



SOLVENT CDCL3
 NS 8
 DS 0
 SWH 9803.922 Hz
 FIDRES 0.326819 Hz
 AQ 1.5299480 sec
 RG 20.2
 DW 51.000 usec
 DE 6.00 usec
 IE 298.2 K
 DI 1.50000000 sec
 TD0 1

===== CHANNEL f1 =====
 NUC1 1H
 P1 7.50 usec
 PL1 2.60 dB
 PL1W 6.62584448 W
 SF01 600.3345228 MHz
 SI 32.758
 SF 600.3300135 MHz
 EM
 SSB 0
 LB 0.30 Hz
 GB 0
 PC 1.00

